

Location

9915 Maple Park
Live Oak, CA 95953

Located off HWY 99 in central
Live Oak between Gum St.
& Maple Park.

Building Amenities

- Thirty-two 1 bedroom/1 bath units and three 2 bedroom/1 bath units (2 fully accessible).
- On-site manager.
- Part-time service coordinator to provide resident services and activities.
- Convenient and central location; walking distance to many services.

About Maple Park

- Affordable, new and attractive apartment community for seniors 55 years or older.
- Excellent management and maintenance practices.
- Safe and conveniently located.
- Let us help you call this home-accepting applications now.
- Under construction-anticipate completion March, 2016.

Contact

Regional Housing Authority
For questions or to request an application, please contact
Daisy Lizama at (530) 671-0220 ext 114

Managed by

Community Housing
Improvement Program (CHIP)

1001 Willow Street
Chico, CA 95928

www.chiphousing.org

Ph: (530) 891-6931

Toll-Free: (888) 912-4663

TTY: (530) 896-2261

Fax: (530) 891-8547

BRE# 01986456



MAKE YOUR HOME MAPLE PARK SENIOR APARTMENTS



In Partnership





Design

- One 3-story elevator building.
- Thirty-two (1 bedroom/1 bath units) 523-614 square feet.
- Three (2 bedroom/1 bath units) 763 square feet.

Developers & Owners

Regional Housing Authority of Sutter and Nevada Counties and Community Housing Improvement Program, Inc.



Unit Amenities

Central heating and air, ceiling fans in living room and bedrooms, blinds, living room, dining room, full kitchen including dishwasher, bathroom, bedroom. Some units have exterior storage closets, pantry and linen cabinets, roll-in showers, front porches or terraces.

Project amenities

Community room, reading rooms, shared laundry facility, surveillance cameras, elevator, on-site parking, courtyard, ground floor common restroom.

Services

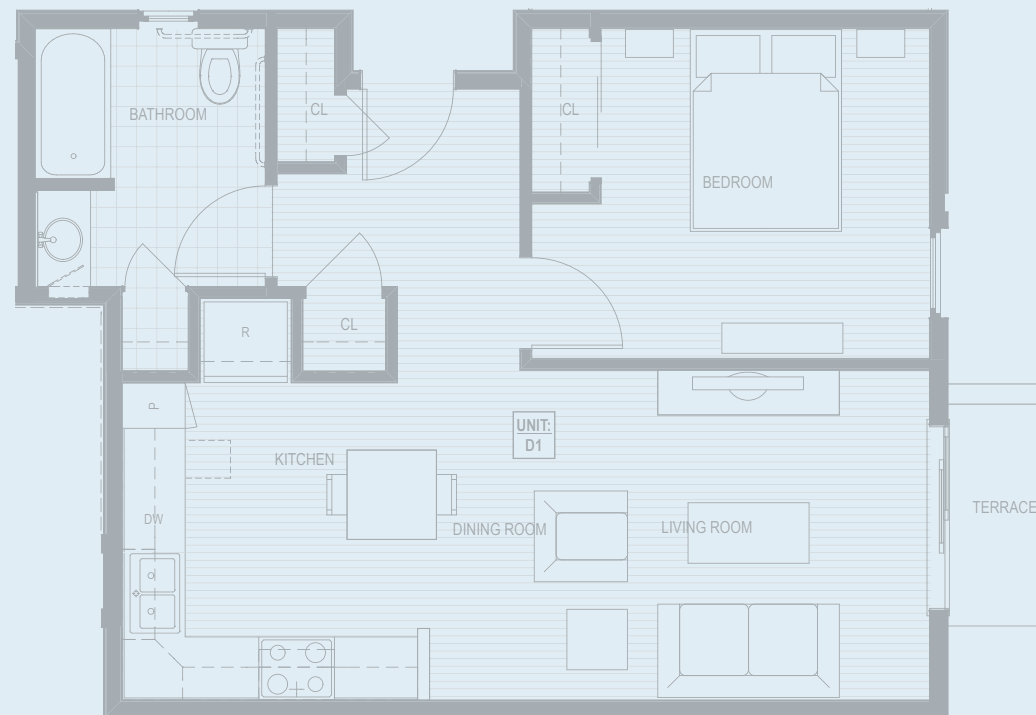
Within half-mile radius of bus stop, Sheriff and Fire Department, medical clinic, full scale grocery store, park, library, pharmacy and bank.

Proximity to other towns

30 minutes to Oroville, 15 minutes to Yuba City and 10 minutes to Gridley.

Income/Rent Information

Rents are affordable and based on household income. Income restrictions apply.



Typical One Bedroom Plan